

Brick Procedure:

Laying Leads;
Laid to a Line;
New set of Leads...

Mortar Joints:

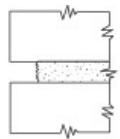


Fig. 9-3. Properly prepared joint.

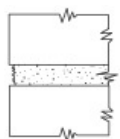


Fig. 9-4. Improperly prepared joint.—too shallow.

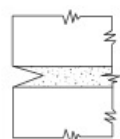


Fig. 9-5. Improperly prepared joint.—furrow should be eliminated.

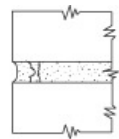


Fig. 9-6. Improperly filled joint.

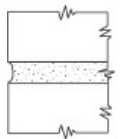


Fig. 9-7. Concave joint.

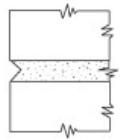


Fig. 9-8. V-joint.

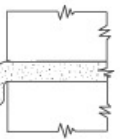


Fig. 9-9. Weeping mortar joint.

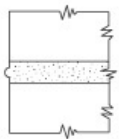


Fig. 9-10. Beaded mortar joint.

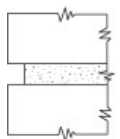


Fig. 9-11. Raked mortar joint.

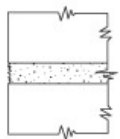


Fig. 9-12. Flush mortar joint.

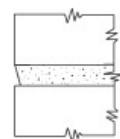


Fig. 9-13. Struck mortar joint.

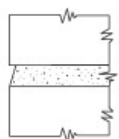


Fig. 9-14. Weathered mortar joint.

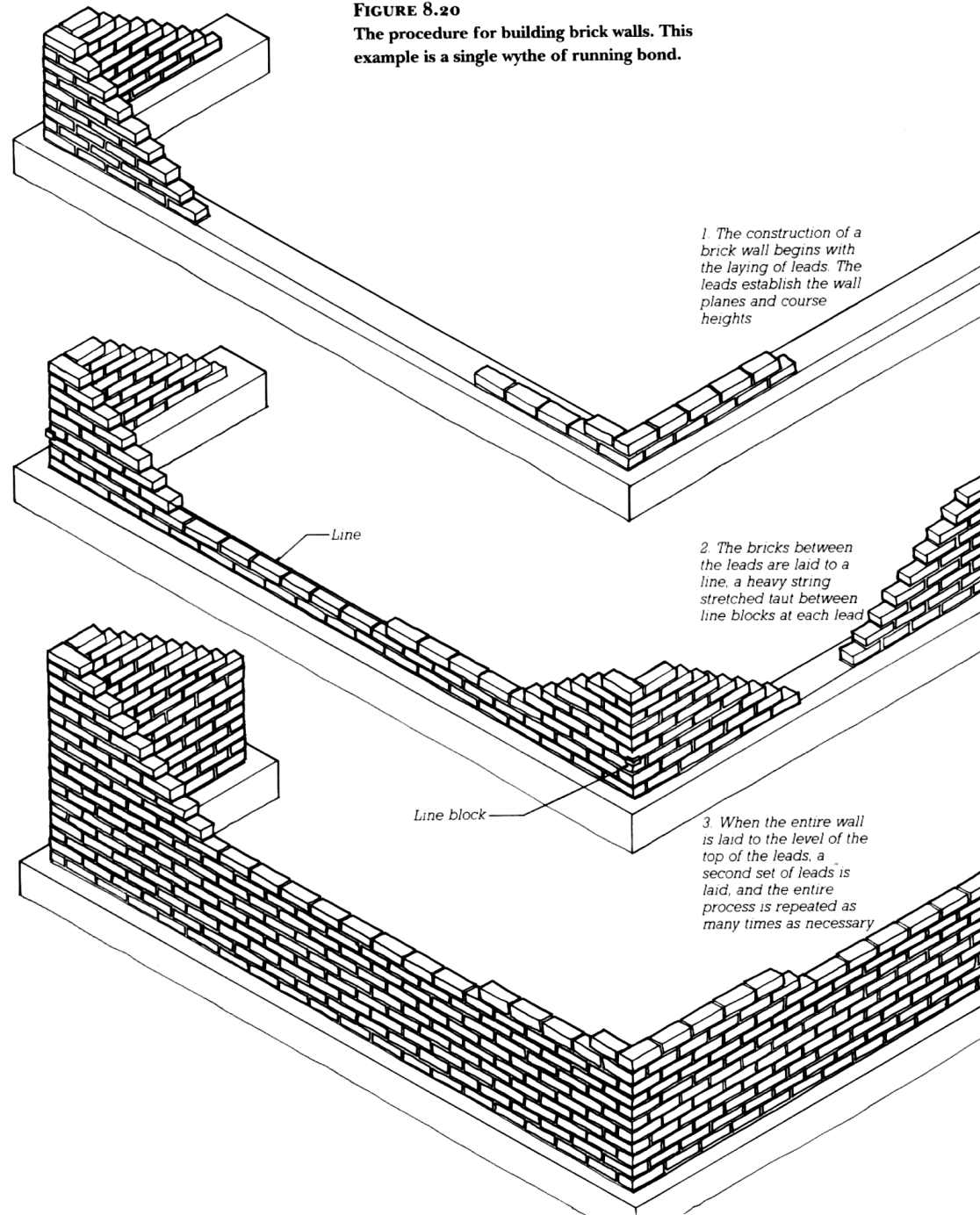


FIGURE 8.20
The procedure for building brick walls. This example is a single wythe of running bond.

1. The construction of a brick wall begins with the laying of leads. The leads establish the wall planes and course heights.

2. The bricks between the leads are laid to a line, a heavy string stretched taut between line blocks at each lead.

3. When the entire wall is laid to the level of the top of the leads, a second set of leads is laid, and the entire process is repeated as many times as necessary.

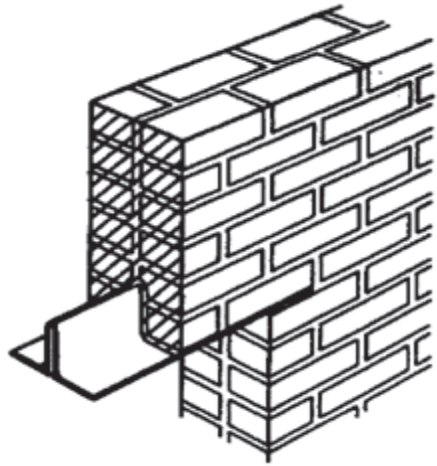
Considerations of Sustainability in Brick Masonry

- Materials often found locally; +
- Energy Intensive; -
- Gathering Materials do disrupt habitats -
- Long lasting, and re-usable +
- No negative effect on indoor air quality +
- Thermal mass useful in energy systems +
- Relatively small waste in construction +

Actual images from the publication
Brick: The Case for Sustainability



Spanning Openings: Lintels



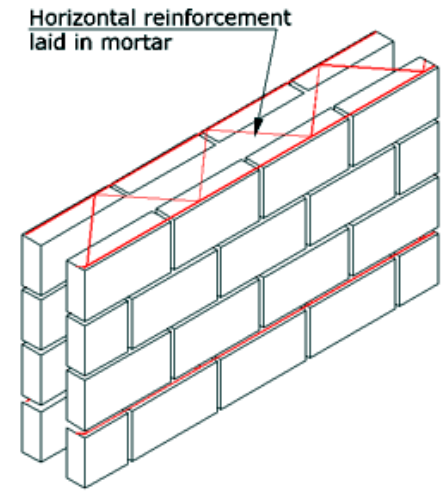
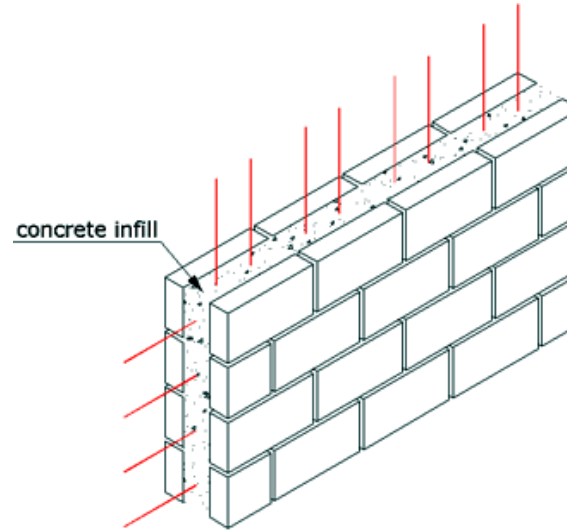
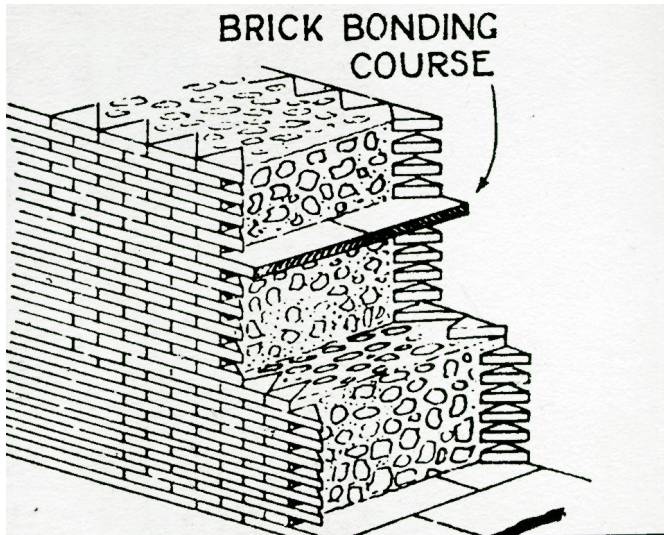
Corbels



Arch



Reinforced Brick Masonry



Masonry Accessories: Ties, Reinforcement, Fasteners, Flashing, Spacers, Weeps, Cavity Devices...

CSI Divisions for Masonry:

- 04050 Basic Masonry Materials and Methods
- 04100 Mortar and Masonry Grout
- 04150 Masonry Accessories
- 04200 Masonry Units
- 04400 Stone
- 04500 Refractories
- 04600 Corrosion-Resistant Masonry
- 04700 Simulated Masonry
- 04800 Masonry Assemblies
- 04900 Masonry Restoration and Cleaning

MA-SON-RY

not

MA-SON-A-RY