

# Jeremy Kargon, Architect

3418 Roland Avenue  
Baltimore, Maryland 21209

Phone: +1 (443) 739 -2886  
E-mail: [jk@JKargon-Architect.com](mailto:jk@JKargon-Architect.com)

---

## E D U C A T I O N

1988 **Master of Architecture**, Columbia University, New York, NY  
1985 **Bachelor of Arts**, Yale University, New Haven, CT  
1981 **A-Course Diploma**, Baltimore Polytechnic Institute, MD

---

## J O B H I S T O R Y

2003 to Present **Clipper Crest LLC**, Baltimore, Maryland  
*Architectural consulting and property development.*

2006 to 2007 **HCM Architects**, Baltimore, Maryland  
*Project Architect: Health Care, Housing, & Institutional.*

2004 to 2006 **CSD Architects**, Baltimore, Maryland  
*Project Architect, "Senior Living" Design Studio*

1994 to 2003 **Schocken Architects Ltd.**, Jerusalem, Israel  
*Project Architect: Education, Institutional, & Facilities*

1991 to 1993 **OptiCOM Visual Systems**, Baltimore, Maryland  
*Sole Proprietor: Document scanning, software R&D, and Internet-based document provision.*

1990 to 1991 **George Vaeth Associates**, Columbia, Maryland  
*Intern Architect.*

1988 to 1990 **Bonnett and Brandt**, Baltimore, Maryland  
*Intern Architect.*

---

## R E G I S T R A T I O N

**Maryland** (Active; granted 1992)  
**New York** (Inactive since 1995; granted 1991)  
**New Jersey** (Inactive since 1995; granted 1991)

**LEED** (Accredited since 2006)

# Jeremy Kargon, Architect

3418 Roland Avenue  
Baltimore, Maryland 21209

Phone: +1 (443) 739 -2886  
E-mail: [jk@JKargon-Architect.com](mailto:jk@JKargon-Architect.com)

---

## W R I T I N G S

"A Community Revealed: The Reginald F. Lewis Museum,"  
Curator - **The Museum Journal**, Volume 49, #1, January 2006, pp. 90-94.

"Hampden Vitalization," unpublished essay, December 2003.

"The Future of Future's Past," unpublished essay, October 2002.

"Technology on Display," unpublished essay, October 2002.

"Maryland Learning Center for Sustainable Technologies," unpublished project proposal and description, January 2006.

See [http://www.jkargon-architect.com/02\\_Writings.html](http://www.jkargon-architect.com/02_Writings.html)

---

## A C A D E M I A

Co-Instructor: **Johns Hopkins University**, School of Continuing Study  
"The Emergence of Visual Culture" (3-Credit Course, 1992)

Invited, review-time guest critic at the following institutions:

<b>Morgan State University</b>	(2004-2007)
<b>Maryland Institute of Art</b>	(2006)
<b>New Jersey Institute of Technology</b>	(2003-2006)
<b>University of Philadelphia</b>	(2003-2004)
<b>University of Tel Aviv</b>	(2002)

---

## T E C H N I C A L

**AUTOCAD** (14 Years Experience);  
**REVIT** (3-Day Training Seminar, Dec. 2005)

*Also acquainted with the use of Photoshop, Pagemaker, Word, and Dreamweaver*

# Jeremy Kargon, Architect

3418 Roland Avenue  
Baltimore, Maryland 21209

Phone: +1 (443) 739 -2886  
E-mail: [jk@JKargon-Architect.com](mailto:jk@JKargon-Architect.com)

## VIDEO & MEDIA

Four Films about Buildings by Ando: *Times I & II;*  
*Collezione;*  
*Himeji Museum of Literature;*  
*Omotesando Hills Center*

Films about Contemporary Japan: *Images of an Ideal;*  
*Epicenter of Contemporary Culture;*  
*Vinoli's Tokyo Forum;*  
*Himeji Castle;*  
*Muse Concert Hall, Kyoto.*

Videos with General Themes: *New York CRASHBANG;*  
*A Trip on the London Eye;*  
*Venice Close Up;*  
*Peabody Library;*  
*Battery Park City;*  
*Patterson Park Pagoda;*

See [http://www.jkargon-architect.com/03\\_Video-and-Other-Media.html](http://www.jkargon-architect.com/03_Video-and-Other-Media.html)

Graphic Work (Selected Projects): *Electric Venus;*  
*Breugel and the Bagel of Babel;*  
*Yoav's Thing.*

See [http://www.jkargon-architect.com/03\\_GraphicsO1.html](http://www.jkargon-architect.com/03_GraphicsO1.html)

Architectural Photography:  
(Selected Works) *Foster's Swiss Re;*  
*Nouvel's Lyon Opera;*  
*Borel's Rue Pelleport;*  
*Under a Bridge.*

See [http://www.jkargon-architect.com/03\\_ImagesO1.html](http://www.jkargon-architect.com/03_ImagesO1.html)

# Jeremy Kargon, Architect

3418 Roland Avenue  
Baltimore, Maryland 21209

Phone: +1 (443) 739 -2886  
E-mail: [jk@JKargon-Architect.com](mailto:jk@JKargon-Architect.com)

## P R O J E C T S



**Residence at Lot 107**, 3418 Roland Avenue, Baltimore, Maryland *Completed 2005*

Designed for speculative re-sale, this house includes full living facilities, carport, three bedrooms, and three bathrooms in 1445 square feet. The bulk and massing of adjacent, traditional row-homes were maintained, but the materials are borrowed from contemporary commercial architecture: EIFS and split-face CMU.

JK: Owner and Architect (all design and contract documents)



**Cfar haNoar**, Hebrew University Campus, Jerusalem, Israel *Completed 2005*

The third building of a group of educational facilities within the Hebrew University Campus, this project provides 19 four-student units, dining facilities, and a social hall within 17,000 sq. ft. The south facade, a sun-protected arcade, will bring greater definition and activity to the complex's exterior court, much like a village square.

JK: Project Architect for Schocken Architects (all design, contract documents, and initial supervision)



**KBA Press Extension**, HaAretz Press Facility, Tel Yitzhak, Israel *Completed 2002*

An extension to an industrial facility completed only two years before, the KBA Press Extension is a radical rethinking of typical planning for newspaper buildings. Support services, stacked vertically, are nestled immediately adjacent to the press machine. The north elevation is thus given entirely over to a glass curtain-wall, affording light and views of the machine at night. The entire extension fits into approximately 12,000 square feet.

JK: Project Architect for Schocken Architects (all design, contract documents, and site supervision)

> See [http://www.jkargon-architect.com/01\\_Project-Page.html](http://www.jkargon-architect.com/01_Project-Page.html)

# Jeremy Kargon, Architect

3418 Roland Avenue  
Baltimore, Maryland 21209

Phone: +1 (443) 739 -2886  
E-mail: [jk@JKargon-Architect.com](mailto:jk@JKargon-Architect.com)

## P R O J E C T S



**Minicom Company Headquarters**, Har Hotzvim, Jerusalem, Israel *Completed 2001*

This building was custom-designed to include R&D, manufacturing, shipping/receiving, and management offices for the Minicom Company, makers of electronic video devices. The facilities include eating facilities and parking on three subterranean levels. Total area amounts to approximately 36,000 square feet of usable space and 40,000 square feet for parking.

JK: Project Architect for Schocken Architects (all design, contract documents, and site supervision)



**Alon Service Station**, Kibbutz Ramat Rahel, Jerusalem, Israel *Completed 2000*

This service station was designed to be the regional flagship of the Alon Company. Massive stone walls shield the pumps from the passing highway and the highly articulated design includes more than 1000 square feet of commercial space, offices, and toilets.

JK: Project Architect for Schocken-Assayag Architects (all design & contract documents)



**Meyerhoff Center**, Hebrew University Campus, Jerusalem, Israel *Completed 2000*

A small teaching facility to complement adjacent life-sciences laboratories, this building includes offices, classrooms, library, lecture hall, and computer facilities in only 7000 square feet. A central atrium affords light and effects a feeling of community for the students, mostly off-campus high-school students who are learning at the college level.

JK: Project Architect for Schocken-Assayag Architects (design, contract documents, & site supervision)

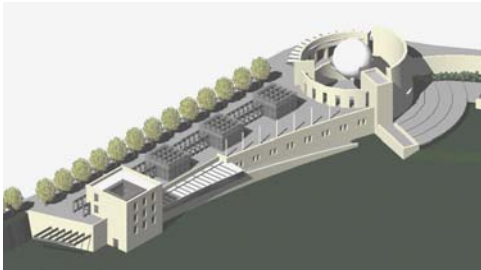
> See [http://www.jkargon-architect.com/01\\_Project-Page\\_02.html](http://www.jkargon-architect.com/01_Project-Page_02.html)

# Jeremy Kargon, Architect

3418 Roland Avenue  
Baltimore, Maryland 21209

Phone: +1 (443) 739 -2886  
E-mail: [jk@JKargon-Architect.com](mailto:jk@JKargon-Architect.com)

## P R O J E C T S



### **Jerusalem Museum of Natural History**, Pri Har, Jerusalem, Israel *Project, 2000*

This design for a museum and its landscaping was one of a series of proposals for planners of a new museum in Jerusalem. Resolved only to a schematic level, the design would include public facilities, IMAX theater, exhibition space, offices, and loading facilities in about 90,000 square feet.

Project Architect for Schocken Architects (all design & presentation documents)



### **HaAretz Press Facility**, Tel Yitzhak, Israel

*Completed 1998*

A major industrial plant, the HaAretz Press Facility houses the main printing presses for several Israeli newspapers, as well as the local edition of the International Herald Tribune. The facility includes paper storage, four presses, mail room, offices, loading bays, and service spaces for electrical and mechanical equipment. Total area is more than 160,000 square feet.

Project Architect for Schocken-Assayag Architects (design, contract documents, & site supervision)

<b>Additional Projects:</b>	Mixed-Use Housing for Rehovot	(2003)
	New Synagogue for Nahalat Emet Congregation	(2002)
	Mixed-Use Housing for Yehud	(2002)
	King David Residences	(1997)
	Mixed-Use Housing for Ra'anana	(1997)
	Elat Sports Arena	(1996)

> See [http://www.jkargon-architect.com/01\\_Project-Page\\_02.html](http://www.jkargon-architect.com/01_Project-Page_02.html)

# Jeremy Kargon, Architect

3418 Roland Avenue  
Baltimore, Maryland 21209

Phone: +1 (443) 739 -2886  
E-mail: [jk@JKargon-Architect.com](mailto:jk@JKargon-Architect.com)

---

## R E F E R E N C E S

**Hillel Schocken**     *Principal, Schocken Architects, Jerusalem, Israel*  
Phone: + 972 - 54 - 240 048

**Ben Posel**     *Principal, Posel Design Works, Brooklyn, NY*  
Phone: (718) 403-9893

**Wassim Jabi**     *Assistant Professor, NJIT, Newark, New Jersey*  
Phone: (973) 968-5100

**Stuart Rehr**     *Principals, GVA Architects, Columbia, Maryland*  
**Chris Lester**     Phone: (410) 997-1000

**Brian Gobell**     *Senior Associate, HCM Architects, Baltimore, MD*  
Phone: (410) 299-5007