

# From Building towards Landscape

Erich Mendelsohn and a Reconstitution of Geographical Forms, 1919-1929

## 7 Illustrations

Figure 01: Herman Kosel, *Die neue Bauform*

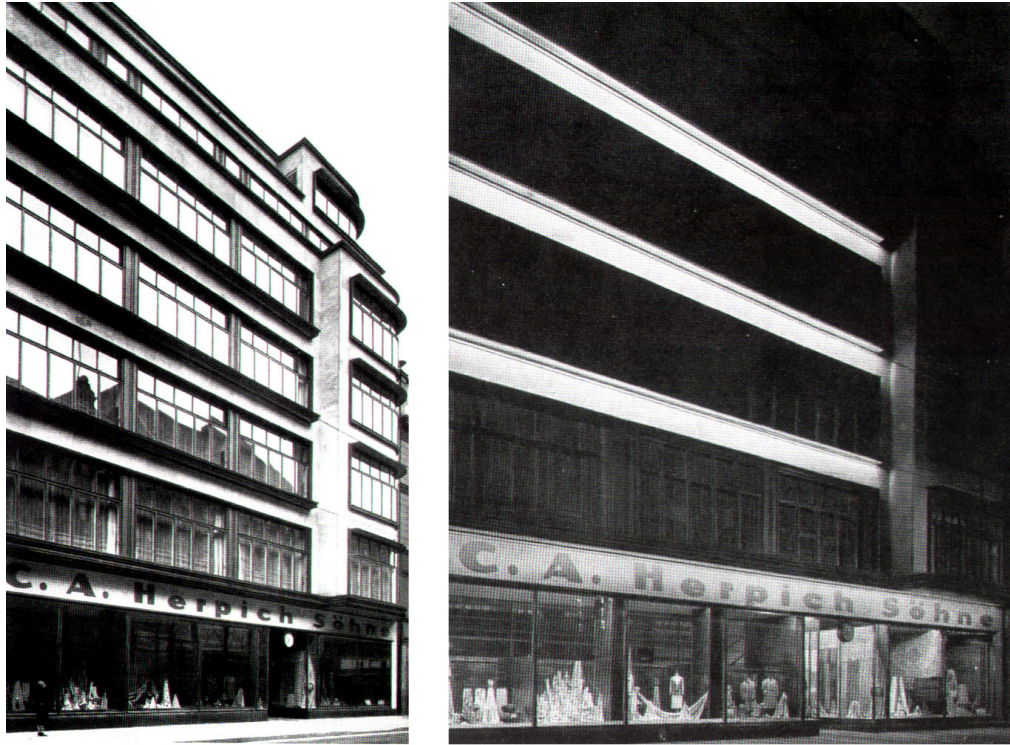


Source: Universitäts-Bibliothek Heidelberg:  
<http://diigitub.uni-heidelberg.de/diigitub/ulk1927/0282> &  
<http://diigitub.uni-heidelberg.de/diigitub/ulk1927/0283>

## From Building towards Landscape

*Erich Mendelsohn and a Reconstitution of Geographical Forms, 1919-1929*

Figure 02: Mendelsohn, *C.A. Herpich Sons Façade* (Day and Evening)



Source: Mendelsohn (1992), 104 and 106

Figure 03: Kosel, *Die neue Bauform* (Detail)



Source: Universitäts-Bibliothek Heidelberg:  
<http://diigitub.uni-heidelberg.de/diigitub/ulk1927/0283>

**From Building towards Landscape**

*Erich Mendelsohn and a Reconstitution of Geographical Forms, 1919-1929*

Figure 04: Mendelsohn, *Imaginary Project* (1917)



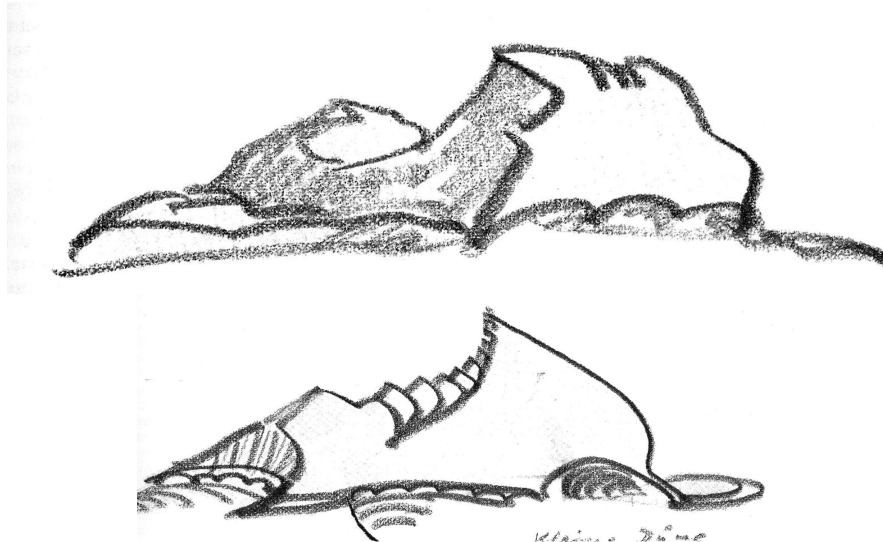
Source: Zevi (1999), 42.

Figure 05: Mendelsohn, *Schocken Department Store in Stuttgart* (1926-1928)



Source: Zevi (1999), 145.

Figure 06: Mendelsohn, *Dune Architecture* (1920)

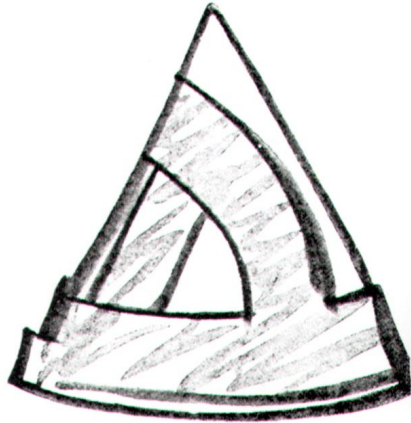


Source: King (1969), 31 and 33.

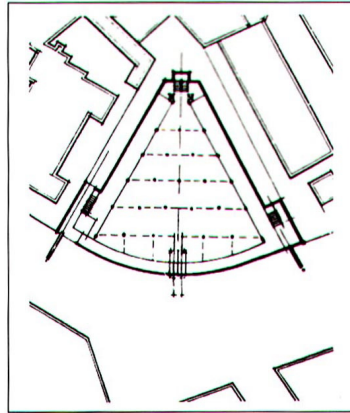
## From Building towards Landscape

Erich Mendelsohn and a Reconstitution of Geographical Forms, 1919-1929

Figure 07: Mendelsohn, *Schocken Department Store in Chemnitz* (1928-1929)



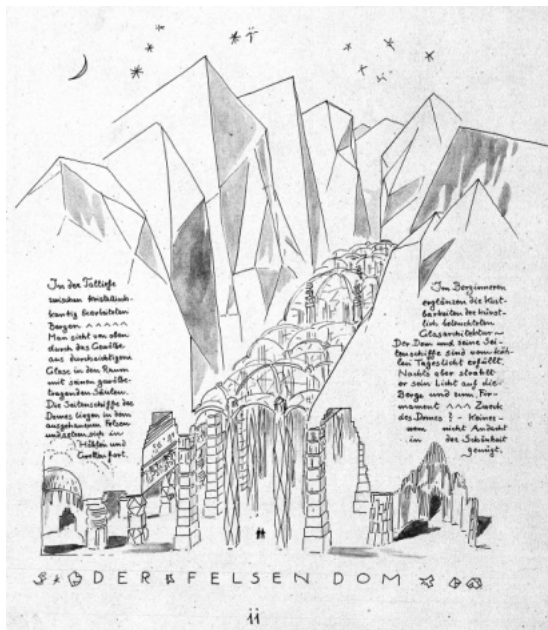
Massing Sketch



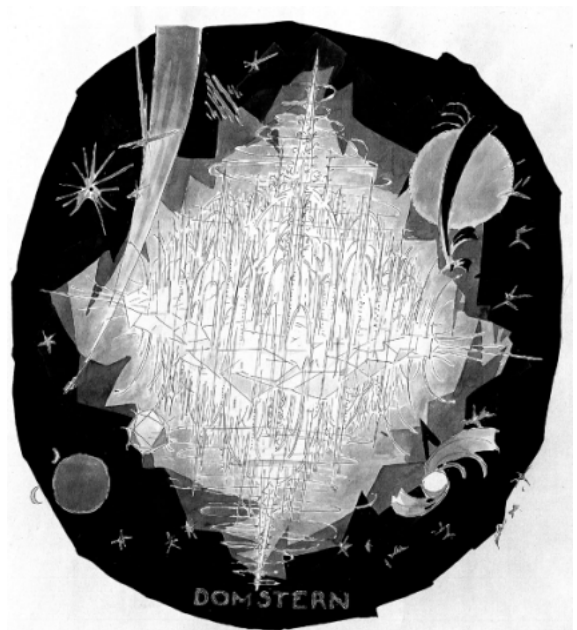
Site Plan Development

Source: Zevi (1999), 174.

Figure 08: Bruno Taut, *The Cathedral in the Rocks* and *The Cathedral Star* (1917)



(a)



(b)

Source: Taut (2004), 57 & 101.

**From Building towards Landscape**

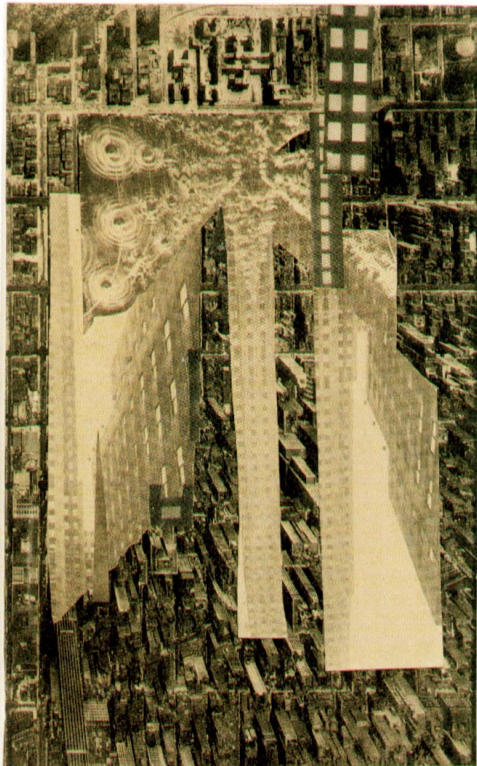
*Erich Mendelsohn and a Reconstitution of Geographical Forms, 1919-1929*

Figure 09: Hamilton Maxwell, Inc., *South Ferry* (n.d.)



Source: New York Public Library Digital Gallery  
<http://digitalgallery.nypl.org/nypldigital/id?723203F>

Figure 10: Hannah Hoch, *New York* (1922) & Paul Citroen, *Metropolis* (1923)



(a)  
Source: Boswell and Makela (1996), 41.



(b)  
Source: <http://z.about.com/d/milwaukee/1/0/i/-/-/Citroen.jpg>

## From Building towards Landscape

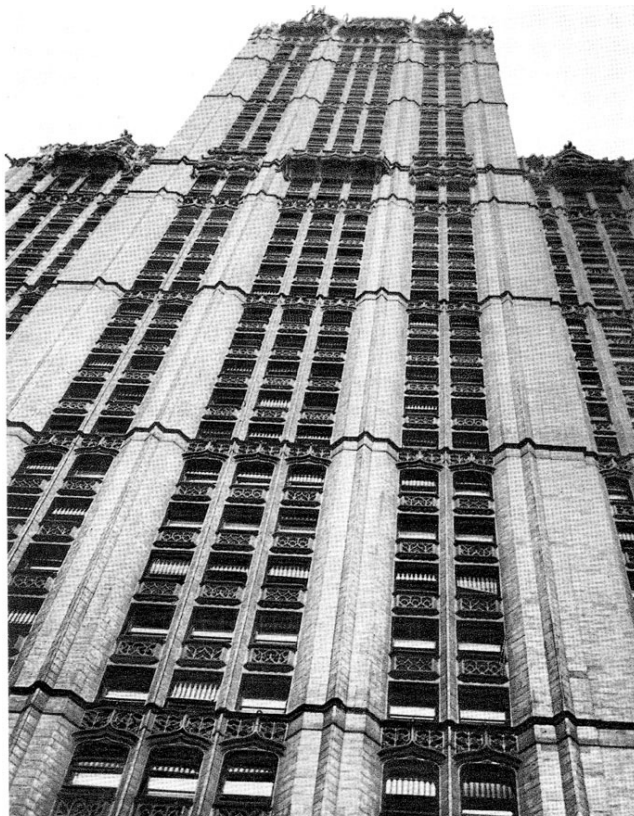
*Erich Mendelsohn and a Reconstitution of Geographical Forms, 1919-1929*

Figure 11: Le Corbusier and Pierre Jeanneret,  
*Contemporary City for Three Million Inhabitants* (1922)



Source: von Moos (1982), 223.

Figure 12: Erich Mendelsohn, *Woolworth Building* (1926)

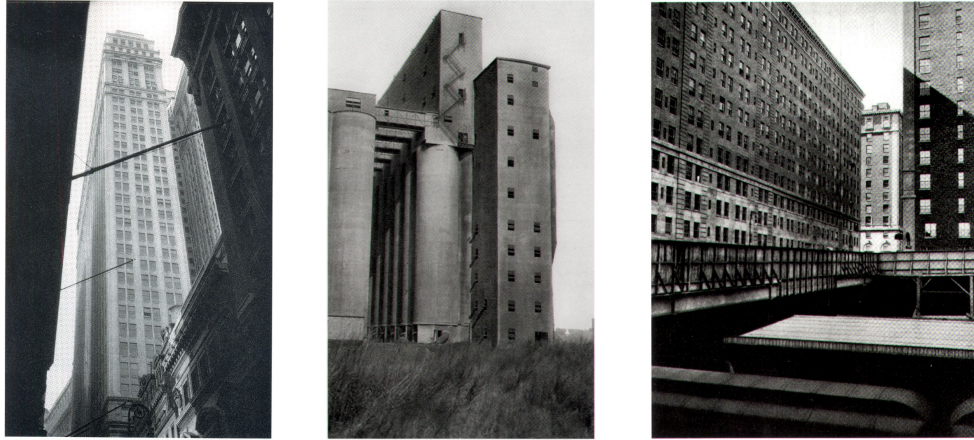


Source: Mendelsohn (1992), 99. In *Amerika's* 1928 edition, this photograph was credited to the Danish architect, K. Lonberg-Holm.

## From Building towards Landscape

*Erich Mendelsohn and a Reconstitution of Geographical Forms, 1919-1929*

Figure 13: Erich Mendelsohn, images from  
*Amerika: Bilderbuch eines Architekten* (1926)



Source: Mendelsohn (1992), 17, 127, 141.

Figure 14: Erich Mendelsohn, images from *Russland Amerika Europa* (1929)



Plate 19, *Kischi – 2*  
Source: Mendelsohn (1989), 47. Credited to Grabar, *Historische Architektur*.

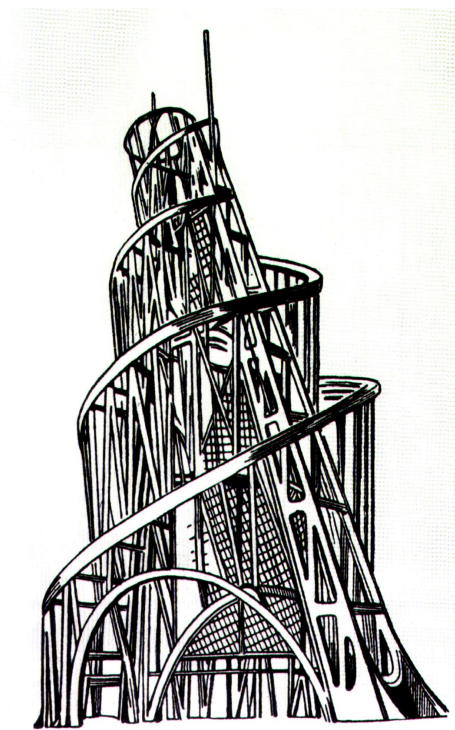


Plate 97, *Turm der Arbeit* (Vladimir Tatlin)  
Mendelsohn (1989), 209. Credited to Adolf Behne, *Der Moderne Zweckbau*.

**From Building towards Landscape**

*Erich Mendelsohn and a Reconstitution of Geographical Forms, 1919-1929*

Figure 15: Erich Mendelsohn, images from *Russland Amerika Europa* (1929)



Plate 17, *Bauplatz*  
Source: Mendelsohn (1989), 153



Plate 48, *Leningrad / Auferstehungskirche*  
Mendelsohn (1989), 105

Figure 16: Erich Mendelsohn, image from *Russland Amerika Europa* (1929)

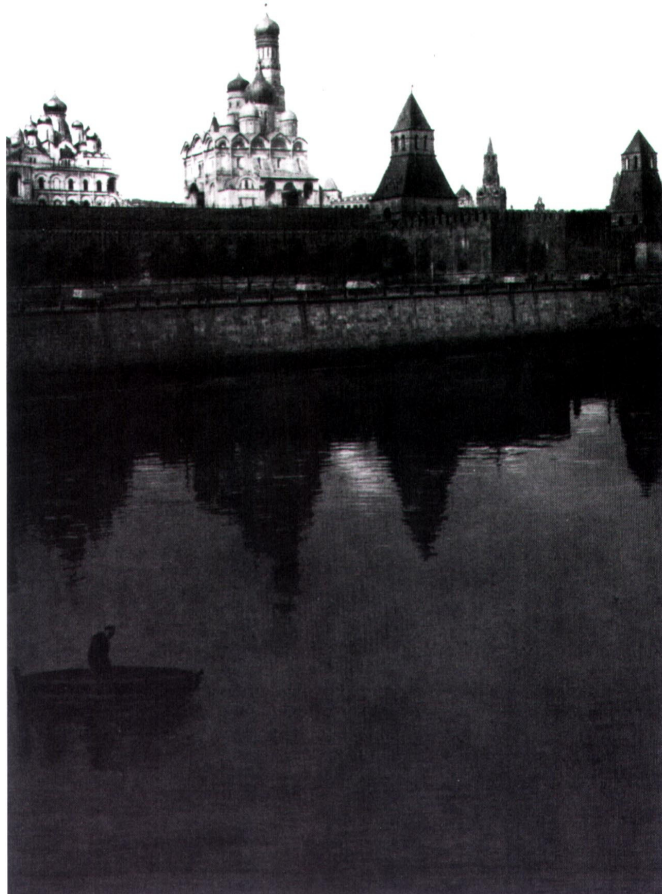


Plate 37, *Moskau – Krem von der Moskwa aus*  
Source: Mendelsohn (1989), 83



**From Building towards Landscape**

*Erich Mendelsohn and a Reconstitution of Geographical Forms, 1919-1929*

Figure 17: Erich Mendelsohn, Pictures from *Amerika* (left) and *Russland Europa Amerika* (right).



*Nebenstrasse* (Side Street)

Source: Mendelsohn (1992), 145; Mendelsohn (1989), 13



*Buffalo -- Getreidespeicher* (Grain Silo)

Source: Mendelsohn (1992), 113; Mendelsohn (1989), 19

**From Building towards Landscape**

*Erich Mendelsohn and a Reconstitution of Geographical Forms, 1919-1929*

Figure 18: Erich Mendelsohn, image from *Russland Amerika Europa* (1929)  
Plate 14, *New York – vom Paramount Building zum East River*



Source: Mendelsohn (1989), 35. Credited to Sigurd Fisher.

## From Building towards Landscape

*Erich Mendelsohn and a Reconstitution of Geographical Forms, 1919-1929*

Figure 19: Erich Mendelsohn, image from *Russland Amerika Europa* (1929)  
Plate 25, *Moscow / Kolomskoje I*



Source: Mendelsohn (1989), 59.

Figure 20: Erich Mendelsohn, image from *Russland Amerika Europa* (1929)  
Plate 38, *Moscow / Lubjanka*



Source: Mendelsohn (1989), 85.

**From Building towards Landscape**

*Erich Mendelsohn and a Reconstitution of Geographical Forms, 1919-1929*

Figure 21: Erich Mendelsohn, image from *Russland Amerika Europa* (1929)  
Plate 39, *Leningrad / Passage*

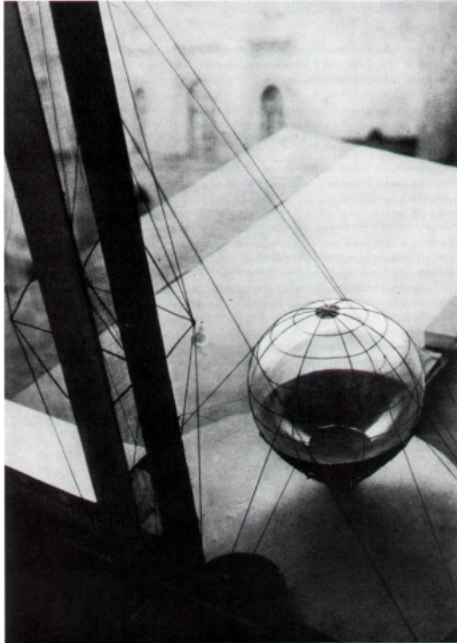


Source: Mendelsohn (1989), 87.

**From Building towards Landscape**

*Erich Mendelsohn and a Reconstitution of Geographical Forms, 1919-1929*

Figure 22: Erich Mendelsohn, image from *Russland Amerika Europa* (1929)  
Plate 52, *Moskau 1927 / Projekt zum Lenininstitut*



Source: Mendelsohn (1989), 87. Credited to "Moskauer Kollegen."

Figure 23: Erich Mendelsohn, image from *Russland Amerika Europa* (1929)  
Plate 82, *Kiev / Projekt für das Zeitungsgebäude "Radjansko Selo"*

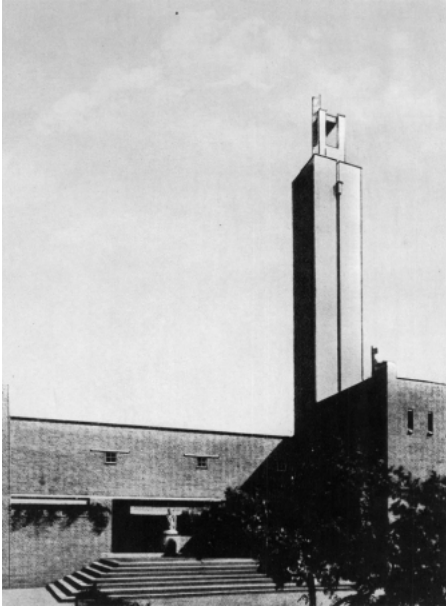


Source: Mendelsohn (1989), 177. Credited to "Moskauer Kollegen."

**From Building towards Landscape**

*Erich Mendelsohn and a Reconstitution of Geographical Forms, 1919-1929*

Figure 24: Erich Mendelsohn, images from *Russland Amerika Europa* (1929)  
Plate 96 (Haarlem Westerveld / Columbarium)  
Plate 99 (New York / Medical Center 2)



Source: Mendelsohn (1989), 207.  
Photograph by Erich Mendelsohn



Source: Mendelsohn (1989), 213.  
Credited to Sigurd Fisher

Plate 100 (Moskau / Kuppel der Erlöserkirche)



Source: Mendelsohn (1989), 214.  
Credited to Grabar, *Historische Architektur*

**From Building towards Landscape**

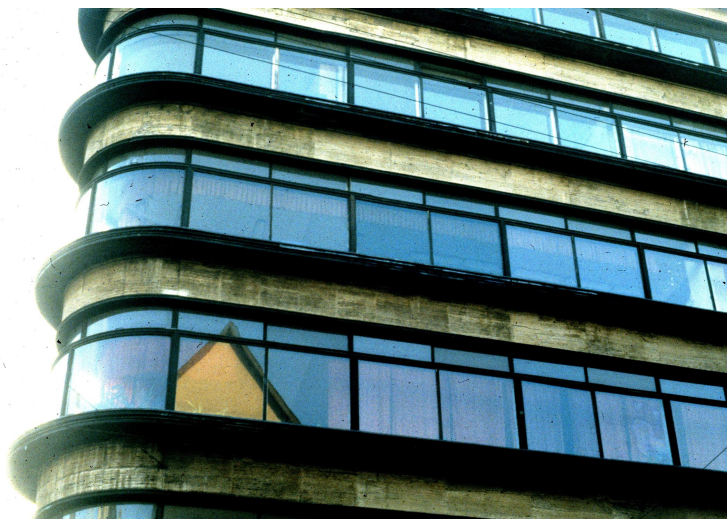
*Erich Mendelsohn and a Reconstitution of Geographical Forms, 1919-1929*

Figure 25: Mendelsohn, *Petersdorff Store*, Wrocław (1927-1928)



Source: Stephan (1999), 102.

Figure 26: Mendelsohn, *Petersdorff Store*, Wrocław (1927-1928)



Source: Photograph by the Author, December 1991.

**From Building towards Landscape**

*Erich Mendelsohn and a Reconstitution of Geographical Forms, 1919-1929*

Figure 27: Mendelsohn, *Petersdorff Store*, Wrocław (1927-1928)



Source: Photograph by the Author, December 1991.

Figure 28: Mendelsohn, *Petersdorff Store*, Wrocław (1927-1928)



Source: Photograph by the Author, December 1991.



**From Building towards Landscape**

*Erich Mendelsohn and a Reconstitution of Geographical Forms, 1919-1929*

Figure 29: Mendelsohn, *Petersdorff Store*, Wrocław (1927-1928)



Source: Photograph by the Author, December 1991.

Figure 30: Mendelsohn, *Petersdorff Store*, Wrocław (1927-1928)



Source: Photograph by the Author, December 1991.